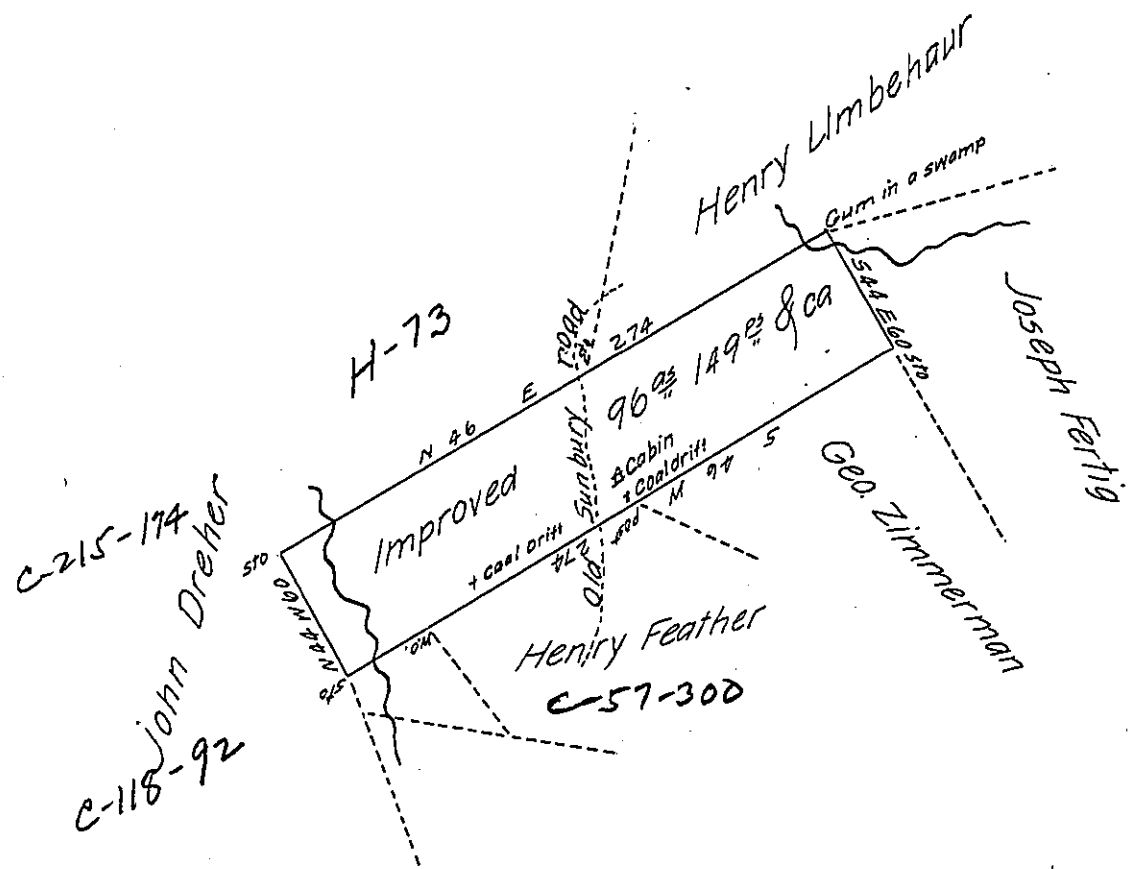


FORM NO. 1.



Improved, situate in Pinegrove township, Schuylkill county containing ninety six acres and one hundred and forty nine perches and the allowance of 6 per Centum, surveyed on the 20th day of December 1826 in pursuance of a Warrant dated the first day of December 1826, granted Francis Spaetzer.

To Gabriel Hiester Esquire, F. Lauderbrun DS of S^t Co.
Surveyor General of Pennsylvania

The improvements are a Cabin (ob) about 7 Years ago no cleared la (ob) fruit trees

F. Lauderbrum

IN TESTIMONY that the above is a copy of the original remaining on file in the Department of Internal Affairs of Pennsylvania, made conformably to an Act of Assembly approved the 16th day of February 1833, I have hereunto set my hand and caused the Seal of said Department to be affixed at Harrisburg, this thirty first day of December 1906

Loac & Pison
Secretary of Internal Affairs.